



RATIONAL SOLUTIONS
IN CHALLENGING SITUATIONS

SUPPLIER OF GLOBAL SOLUTIONS FOR FLUIDS HANDLING APPLICATIONS

ABOVE GROUND STORAGE TANK FARM

Once operations are consolidated, AMA can offer semi permanent and/or permanent solutions based on containerized equipment and/or above ground storage tanks and pump skid/cabinets.



SIMPLICITY

IN APPROACHING COMPLEX SITUATIONS

AMA products range includes a variety of fixed and mobile solutions for fuel storage and transfer operations:



Loading/Unloading Skid – LUS



Aviation Fuel Trailer – AFT



Containerized Dispensing System – CDS



Fuel Transfer Pump – FTP



Air Portable Fuel Cell – APFC



Portable Refueling Pump - PRP



The **AMA Containerized Systems** are “self sustained” units designed and manufactured to transport, transfer, dispense, collect a variety of fluids in support to military operations in the field. Specific variants can be configured on demand for other uses, such as machinery and equipment maintenance, storage, disposal. The systems are based on 20'x8'x8' container complying with ISO specifications (668; 1496-1; 1496-3), suitable to be deployed over a wide range of geographic environments and climatic conditions, typically throughout climatic zones A1 - C1 (+49°C ÷ -32°C) as per AECTP 200/3.



CPFT

It consists of an ADR certified 15'000 l double walled tank, a pumping set/dispensing unit powered by a diesel engine, complete with filter, meters and hose reels, designed to transport and dispense diesel fuel in a safe and uncontaminated way.

The flow rates vary from a minimum of 30 l/min for jerry can filling up to 250 l/min for bulk fuel transfer.



CPWT

The module is a containerized potable water storage and transfer system that includes a tank with a capacity of 15,300 litres, an 800 l/min diesel engine driven pump set, a fully fitted SS piping plus 5x5m suction/delivery food grade hoses suitable to carry out repeated filling/emptying cycles while retaining a high hygienic standard.



CPSS

The variant is an integrated system suitable for sewage evacuation and portable toilet cleaning, featuring an 8,000 litre baffled sewage collection and transport tank including a vacuum pump with appropriate wand and hoses and a 5,000 litre baffled clean water tank including a pressure washing system with appropriate hose and nozzles.



CWS

It is a self sustained workshop unit equipped to support construction, installation and maintenance projects. It can be supplied as an interconnecting multi-modular system or as a standalone unit and can be customised to suit the client's particular specifications.

Units are available in 20' and 40' ISO standard sea containers and are equipped with generator set, air compressor, AC unit, electrical and pneumatic distribution systems, machines, shelves units, storage cabinets and hand tools as per requirements.

RAPID DEPLOYMENT FUEL FARMS

AMA can deliver, install and commission all the fuel related equipment needed in a bulk fuel installation.

These facilities, featuring fuel reception, filtering, storage, transfer, and dispensing equipment are intended to provide high quality fuel to users in rapidly deployable military camps that may be deployed over a wide range of geographic environments and climatic conditions.

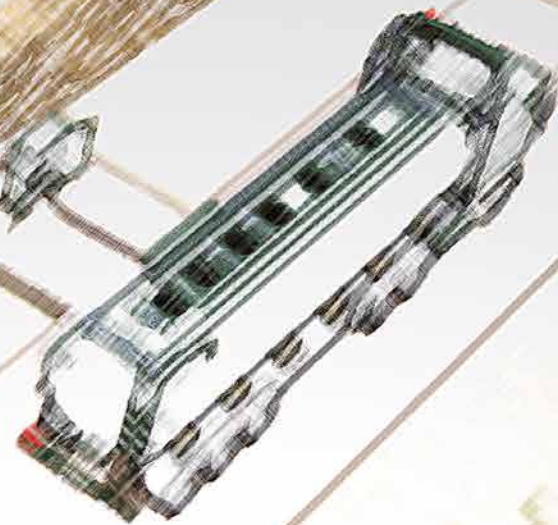


At an early stage, the fuel farm is a combination of collapsible fabric tanks (aka bladders) with adequate pumping system and related accessories, containerized and/or skid mounted.

RATIONAL SOLUTIONS IN CHALLENGING SITUATIONS

In line with our mission to be a supplier of total solutions for fluids handling applications, AMA commitments is to provide straightforward engineered solutions for the transport, storage and distribution of fuels, clean and waste water equipment according to customer requirements.

An integrated control centre located in a dedicated container compartment is capable to control and record operations of the fuel storage and dispensing system, from the reception inlet through to the dispensing pumps.



The installation can be configured to suit a number of applications. The system is constructed in a modular fashion so that it can accommodate changeable factors such as ground, existing facilities and fluctuating storage and distribution requirements.





GLOBAL SOLUTIONS FOR FLUIDS HANDLING APPLICATIONS

