

TT MOBILE



TT MOBILE DIESEL 220



TT MOBILE DIESEL 330
TT MOBILE DIESEL 440



TT MOBILE COMBI

TECHNICAL DATA

The **TT MOBILE** is a linear polyethylene tank designed for Diesel fuel transport **in accordance with ADR regulation** (and AdBlue®/DEF transport for the COMBI version). It is fitted with: lockable lid (optional for mod. 220), built-in forklift pockets, handles for lifting and carrying the empty tank and integrated grooves for securing the tank with ratchet straps during transport. All fittings are made in aluminum or materials compatible with Diesel fuel (and AdBlue®/DEF in the COMBI version).

The **TT MOBILE COMBI** combines separate Diesel and AdBlue®/DEF tanks in the same unit.

The TT MOBILE is equipped with:

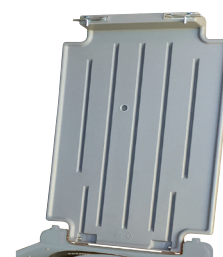
- DC fuel transfer pump, mod. DEVIL40 12V 40 l/min for Diesel fuel.
- Submersible pump 12V 15 l/min for AdBlue®/DEF (COMBI version).
- 4 m hose for Diesel fuel.
- 4 m hose for AdBlue®/DEF (COMBI version).
- Automatic nozzle for Diesel fuel.
- Manual nozzle for AdBlue®/DEF (COMBI version).
- 4 m battery power cable and clamps for battery connection.
- Aluminum filling plug, size 2", equipped with emergency vent valve (air vent valve).
- Polyethylene filling plug, size 2" (COMBI version).
- Level indicator for Diesel fuel.
- In-Line filter for Diesel fuel.

OPTIONAL ELEMENTS

Digital **METER** model K24 (for Diesel).

WATER ABSORBING FILTER, 30 µm.

POLYETHYLENE LID for mod. 220.



Code	Model	Capacity (lt.)	Dimensions (mm.)	Weight (kg)	Pump
3720015	TT MOBILE DIESEL 220	220	910 x 600 x 665h	23	Electric 12V
3720015-1	TT MOBILE DIESEL 220 LID	220	910 x 600 x 665h	24	Electric 12V
3733001	TT MOBILE DIESEL 330	330	1200 x 800 x 650h	32	Electric 12V
3744001	TT MOBILE DIESEL 440	440	1200 x 800 x 785h	40	Electric 12V
3944010	TT MOBILE COMBI	400+50 (diesel+AdBlue®)	1200 x 800 x 785h	57	Electric 12V